

**LONDON  
VICTORIA  
GROUPS** 

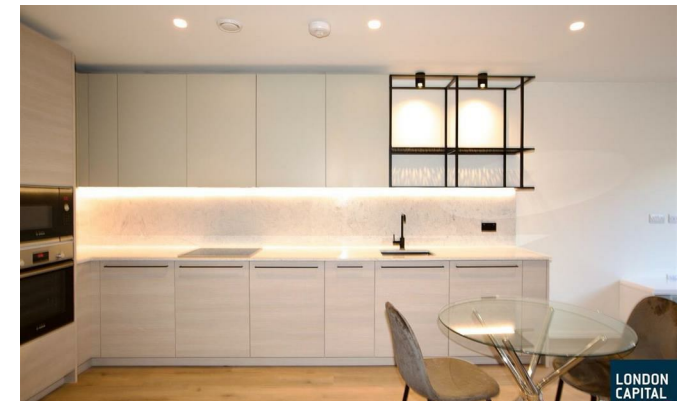


## **Curlew House, 1 Hawser Lane**

, London E14 0YA

- Concierge
- Riverside Living
- CTB-D
- Poplar Riverside
- Co-Working Spaces
- EPC-B

**£2,000 PCM**



Local Authority **Tower Hamlets**  
 Council Tax Band **D**  
 EPC Rating **B**



<b>APARTMENT NOS.</b>	4 / 14 / 24 / 34 / 41 / 48 / 55 / 62 / 80 / 91 / 102 / 113 / 124 / <b>135</b>
<b>FLOORS</b>	1 / 2 / 3 / 4 / 5 / 6 / 7 / 8
<b>Internal measurements</b>	50.0 sq m 538.1 sq ft
<b>External measurements</b>	5.1 sq m 54.8 sq ft
<b>Kitchen/Dining</b>	3.84m x 4.15m 127" x 137"
<b>Living</b>	3.84m x 3.03m 127" x 9'11"
<b>Bedroom</b>	2.93m x 3.81m 9'7" x 12'6"
<b>Balcony</b>	2.26m x 2.10m 7'4" x 6'10"

- SC Storage/cloak cupboard
- S Storage
- C Coat cupboard
- W Wardrobe
- WD Wäschetroger
- U Utility cupboard
- Optional customer upgrade



Depending on the plot location this apartment type may have a limited terrace/plot area. For further information on plot area please contact the sales team.  
 Measurements are for approximate measurements only. Measurements may vary unless a dimension of 19. Dimensions are not intended for use in any contract unless specified in terms of a formal purchase agreement.



LONDON CAPITAL



LONDON CAPITAL



LONDON CAPITAL

**London Office Office**

Spaces Victoria, 25 Wilton Road, Pimlico,  
 London, SW1V 1LW

**Contact**

020 3084 3094  
 XL@londonvictoriagroups.co.uk  
 www.londonvictoriagroups.co.uk

Agents Note: Whilst every care has been taken to prepare these particulars, they are for guidance purposes only. All measurements are approximate and for general guidance purposes only and whilst every care has been taken to ensure accuracy, they should not be relied upon and potential buyers/tenants are advised to recheck the measurements.